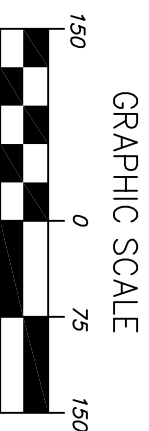
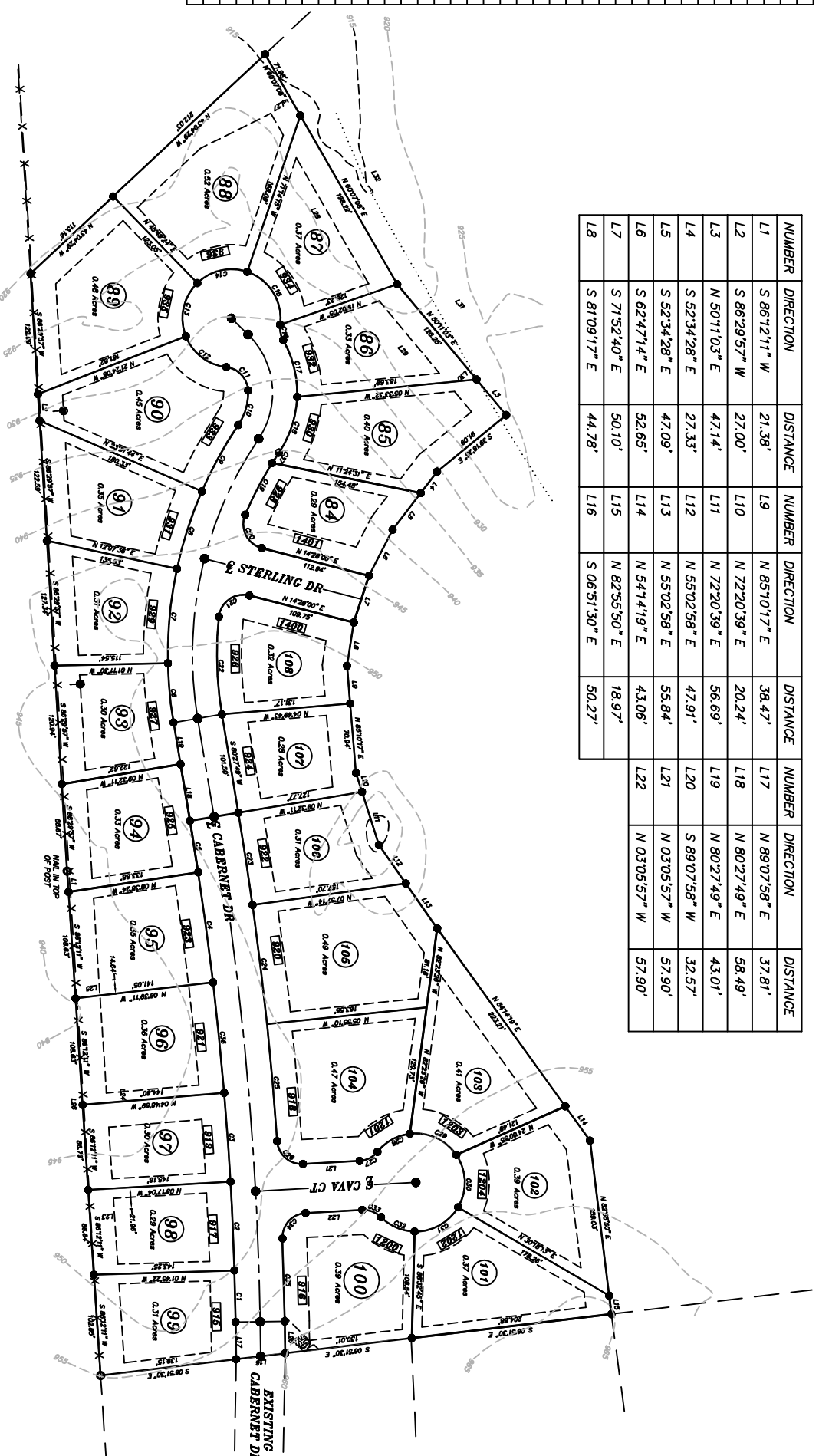


NUMBER	CHORD DIRECTION	RADIUS	ARC LENGTH	CHORD LENGTH
C1	N 88°41'18" E	3391.19	52.61	52.61
C2	N 87°28'47" E	3391.19	90.47	90.47
C3	N 85°56'58" E	3391.19	90.67	90.67
C4	N 82°18'57" E	3391.19	113.16	113.15
C5	N 80°54'42" E	3391.19	53.05	53.05
C6	N 84°38'10" E	416.82	60.71	60.65
C7	S 84°31'57" E	416.82	96.89	96.67
C8	S 72°10'20" E	416.82	82.95	82.81
C9	S 61°10'00" E	416.82	71.18	71.07
C10	S 74°12'27" E	58.25	37.30	36.67
C11	N 46°48'14" E	25.00	35.47	32.57
C12	N 37°22'26" E	50.00	54.48	51.82
C13	S 77°47'58" E	50.00	58.67	55.26
C14	S 12°42'49" E	50.00	54.93	52.21
C15	S 56°08'17" W	50.00	68.73	63.44
C16	S 75°51'17" W	25.00	16.29	16.00
C17	S 76°10'43" W	108.25	60.41	59.62
C18	N 71°50'55" W	108.25	60.41	59.62
C19	N 62°28'56" W	366.82	59.41	59.35
C20	S 63°40'20" W	25.00	42.94	37.85
C21	N 34°44'20" W	25.00	42.94	37.85
C22	S 88°15'35" W	366.82	99.82	99.52
C23	S 81°15'18" W	3441.19	95.05	95.05
C24	S 83°03'48" W	3441.19	122.18	122.18
C25	S 85°04'38" W	3441.19	119.74	119.74
C26	S 41°29'15" W	25.00	38.91	35.10
C27	S 27°11'39" E	25.00	21.03	20.41
C28	S 29°07'20" E	50.00	38.69	37.73
C29	S 24°24'47" W	50.00	54.75	52.05
C30	S 88°03'32" W	50.00	56.33	53.40
C31	N 29°06'18" W	50.00	53.34	50.84
C32	N 23°16'20" E	50.00	38.08	37.17
C33	N 20°59'44" E	25.00	21.03	20.41
C34	N 47°41'10" W	25.00	38.91	35.10
C35	S 88°25'48" W	3441.19	84.42	84.41
C36	N 84°13'40" E	3391.19	113.16	113.15
C37	N 56°51'08" W	366.82	12.68	12.68

NUMBER	DIRECTION	DISTANCE	NUMBER	DIRECTION	DISTANCE	NUMBER	DIRECTION	DISTANCE
L1	S 86°12'11" W	21.38'	L9	N 85°10'17" E	38.47'	L17	N 89°07'58" E	37.81'
L2	S 86°29'57" W	27.00'	L10	N 72°20'39" E	20.24'	L18	N 80°27'49" E	58.49'
L3	N 50°11'03" E	47.14'	L11	N 72°20'39" E	56.69'	L19	N 80°27'49" E	43.01'
L4	S 52°34'28" E	27.33'	L12	N 55°02'58" E	47.91'	L20	S 89°07'58" W	32.57'
L5	S 52°34'28" E	47.09'	L13	N 55°02'58" E	55.84'	L21	N 03°05'57" W	57.90'
L6	S 62°47'14" E	52.65'	L14	N 54°14'19" E	43.06'	L22	N 03°05'57" W	57.90'
L7	S 71°52'40" E	50.10'	L15	N 82°55'50" E	18.97'			
L8	S 81°09'17" E	44.78'	L16	S 06°51'30" E	50.27'			




Not For Recording or Land Transfer

VINEYARD ESTATES, Phase I

Property near Old US 25 North

Berea, Madison County, Kentucky



Abacus
Engineering & Land Surveying
236 Bogue Lane Suite 4
Richmond, KY 40475 (859) 625-1200

Drawn by: JTB
Checked by: DW

Date of Survey: 11/11/2006	Scale: 1" = 60'	Project #: 06-148
Date of Plat: 5-OCT-06		